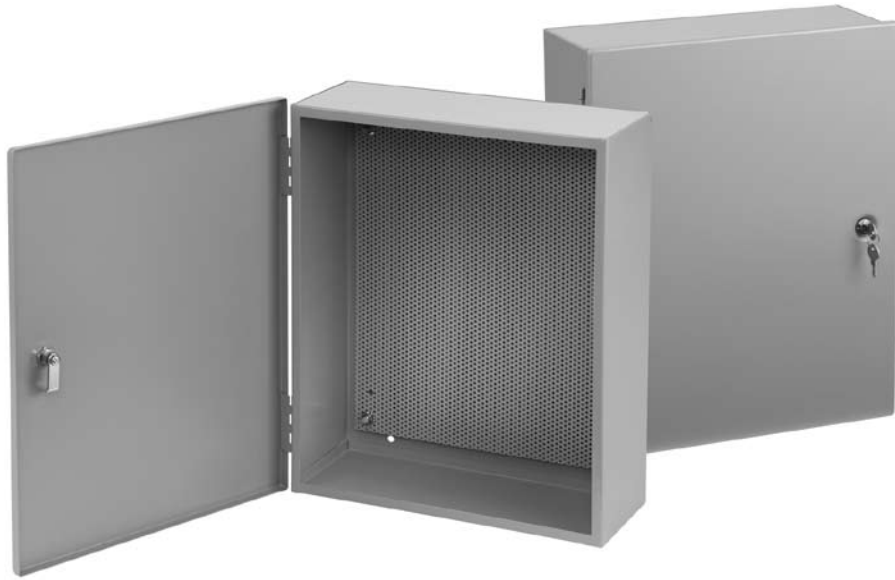


Type I Locking Integrated Perforated Panel Enclosure (Control Box)



Example of Integrated Panel; wiring devices not included.

Application

This convenient combination enclosure with a Perforated Panel assembly provides a ready solution for mounting electrical control gear. The enclosed panel is perforated to reduce the time required to mount components. Use a self-tapping screw to attach components directly onto the panel, eliminating the need to measure, mark, and drill.

Features

- Door has key lock quarter-turn latch; two keys included
- Select models have concentric knockouts on four sides

Construction

- 14 and 16 gauge steel
- Includes removable 16 gauge gray perforated panel

Finish

ANSI 61 gray polyester powder paint finish inside and out over phosphatized surfaces.

Industry Standards

UL 50, File No. E27567: Type I
cUL CSA C22.2 No. 40, File No. E27567: Type I
NEMA/EEMAC Type I
IEC 60529, IP30

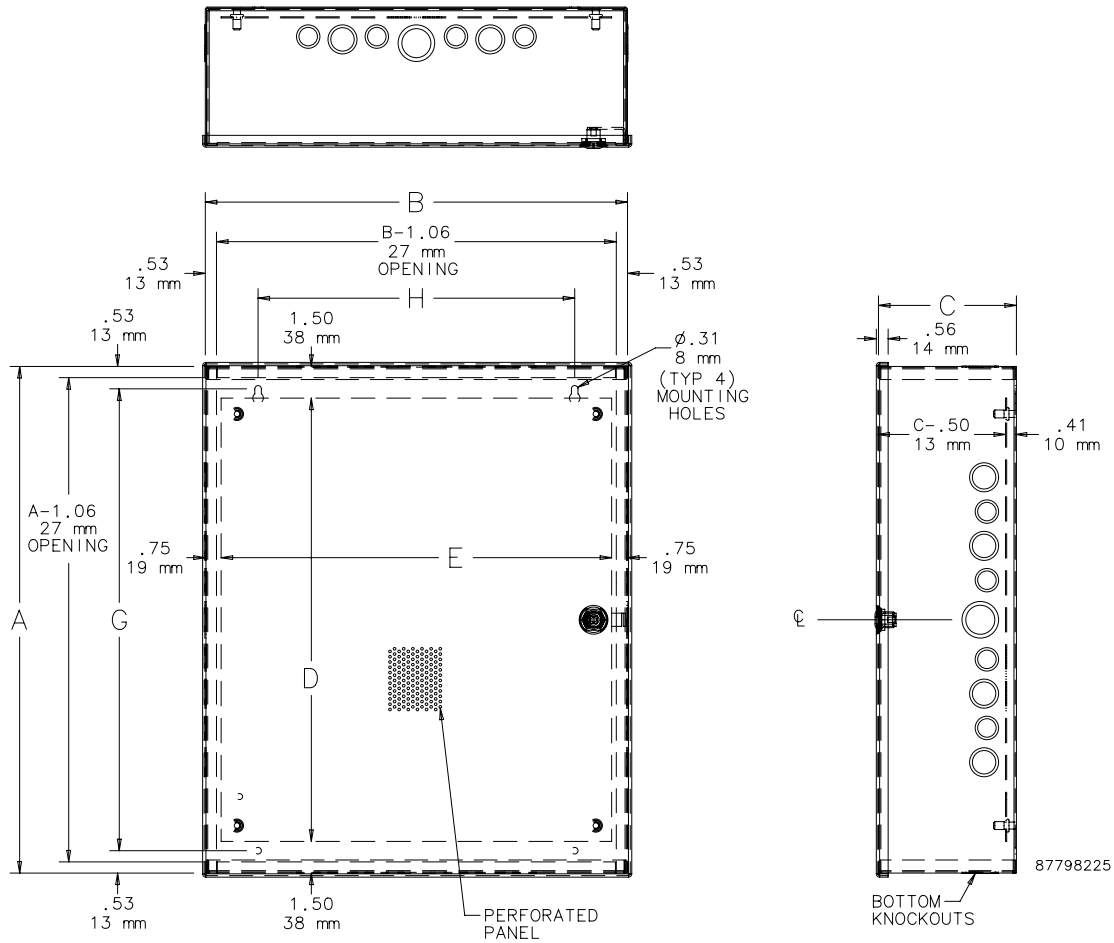
Accessories

Touch-Up Paint (ATPPY61)

Standard Sizes Type I Locking Integrated Perforated Panel Enclosure (Control Box)

Catalog Number	A x B x C in. (mm)	Panel Size D x E (in.)	Panel Size D x E (mm)	Mounting Holes G x H (in.)	Mounting Holes G x H (mm)	Knockout Pattern A-Sides	Knockout Pattern B-Sides
A12126T1PP	12.00 x 12.00 x 6.00 (305 x 305 x 152)	10.25 x 10.25	260 x 260	9.00 x 11.00	229 x 279	C-D-E-F-G	C-D-E-F-G
A16126T1PP	16.00 x 12.00 x 6.00 (406 x 305 x 152)	14.25 x 10.25	362 x 260	13.00 x 11.00	330 x 279	B-C-D-E-F-G-H	C-D-E-F-G
A2016AT1PP	20.00 x 16.00 x 6.62 (508 x 406 x 168)	17.00 x 14.50	432 x 368	17.88 x 11.00	454 x 279	A-B-C-D-E-F-G-H-I	B-C-D-E-F-G-H
A2420AT1PP	24.00 x 20.00 x 6.62 (610 x 508 x 168)	22.50 x 18.50	572 x 470	21.88 x 15.00	556 x 381	A-B-C-D-E-F-G-H-I	A-B-C-D-E-F-G-H-I
A3624AT1PP	36.00 x 24.00 x 6.62 (914 x 610 x 168)	32.00 x 22.50	813 x 572	33.50 x 16.75	851 x 425	—	—
A3630AT1PP	36.00 x 30.00 x 6.62 (914 x 762 x 168)	32.00 x 31.50	813 x 800	33.50 x 22.75	851 x 578	—	—

Type I Locking Integrated Perforated Panel Enclosure (Control Box)



**Commercial Boxes
and Enclosures**

